

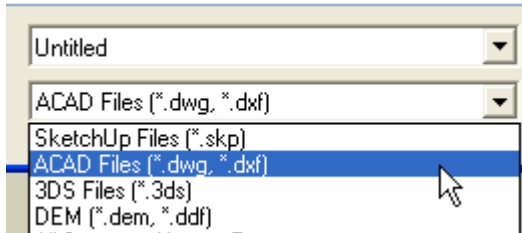
Importing CAD files into Google Sketchup

Preparation in CAD

Simplify your drawing. Turn on walls, doors and windows.
Turn off dimension or furniture layers.
Know what your units are.

Import Cad file, check options

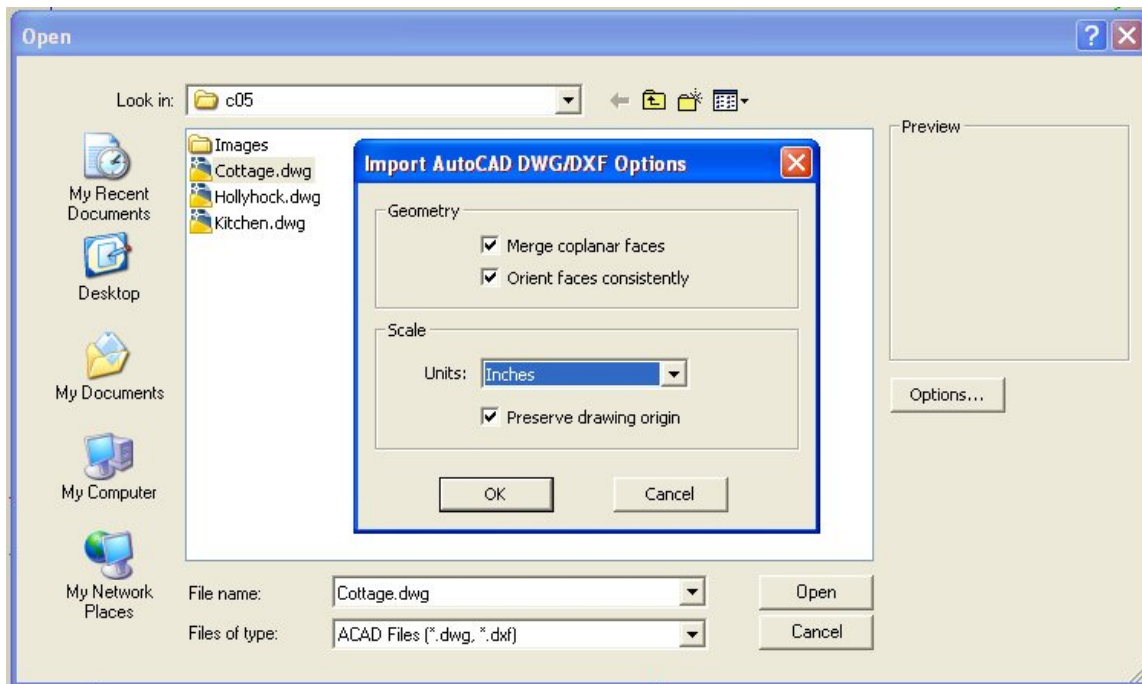
File/import files of type dwg/dxf



Before you import, click **OPTIONS** button on the right.

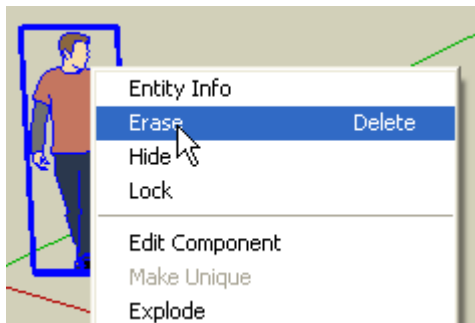
Match these settings;

If your units in your CAD file was not inches, match to the correct units.



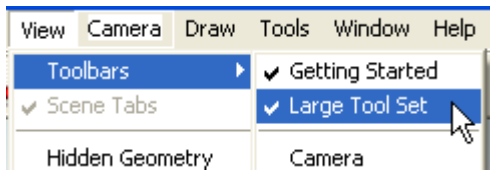
Ok, then click **open**!

While we are at it, let's select the entourage model Brice, and right click erase.



Check size of imported CAD plan

View/Toolbars/Large Tool Set



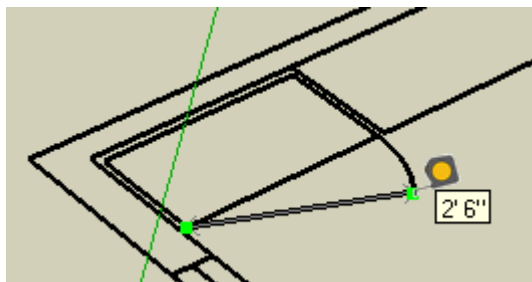
Use the tape measure tool ... about halfway down, outside, on the large toolbar.



Tip – measure with the **end** of the measuring tape.

Click **once at the beginning** and **once at the end** of a given distance you know from your CAD file.
2 green squares should appear.

[If the plan is grouped, the squares will be magenta]



If it is what you expect, fine.

If not, type in the correct distance. This appears in the field at the far right/bottom of the interface.

Hit ENTER

A dialog appears – do you want to resize the model?

The answer is YES.

Make sure plan is grouped

Delete any unwanted guide lines.

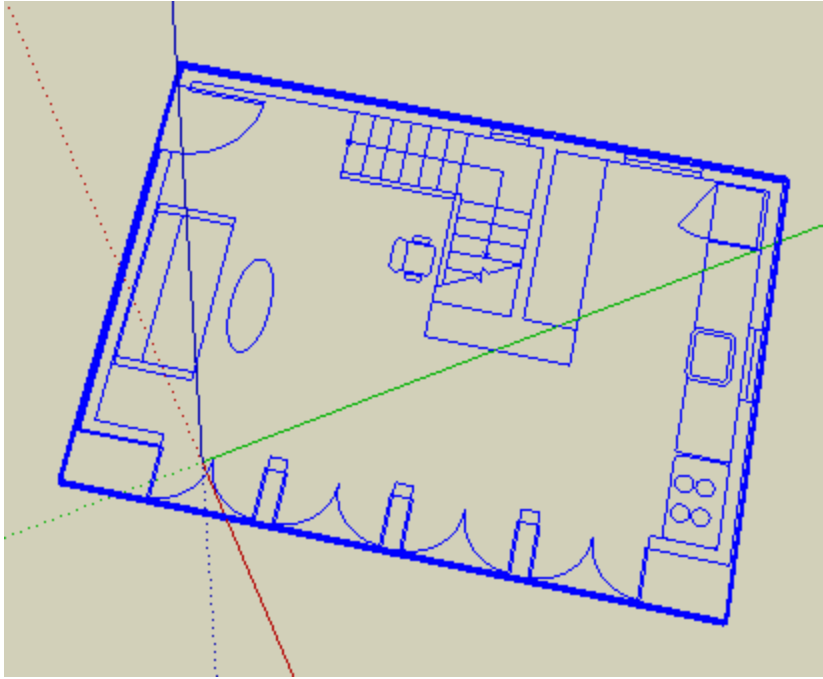
Note -- If Brice was in your file when you imported, your plan is already grouped.

If not, select all, then right click and **make group**.

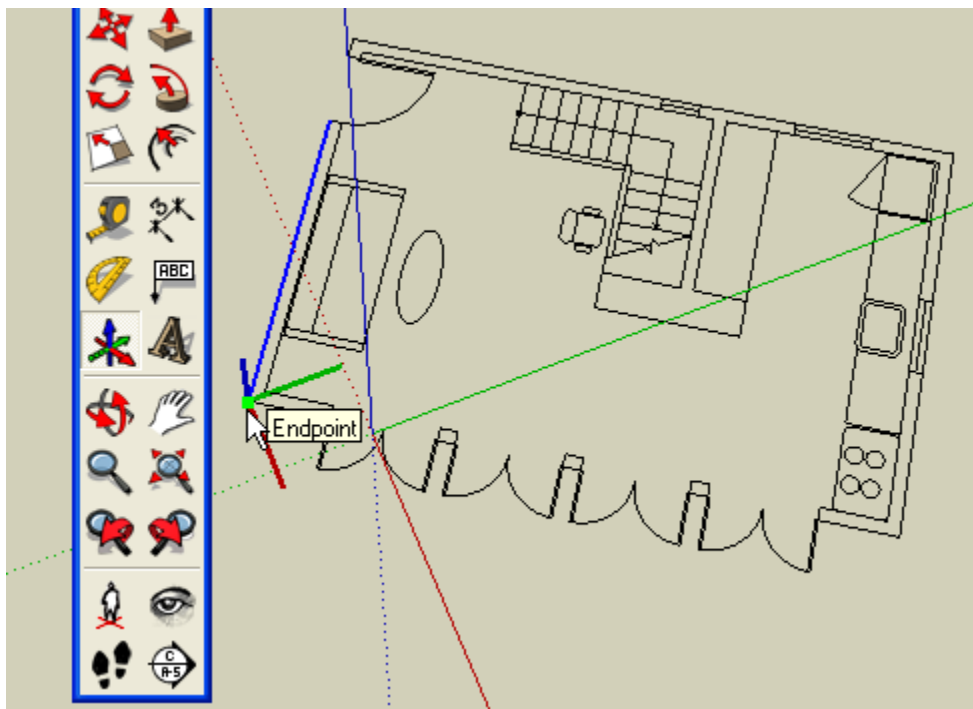
If for any reason you need to temporarily ungroup. Select all then right click **explode**.

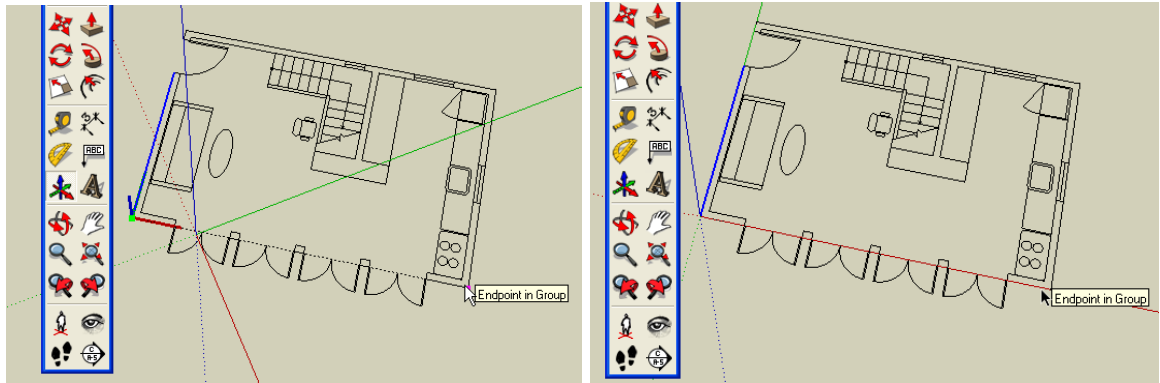
Line up plan with axis

This file imported at an angle:

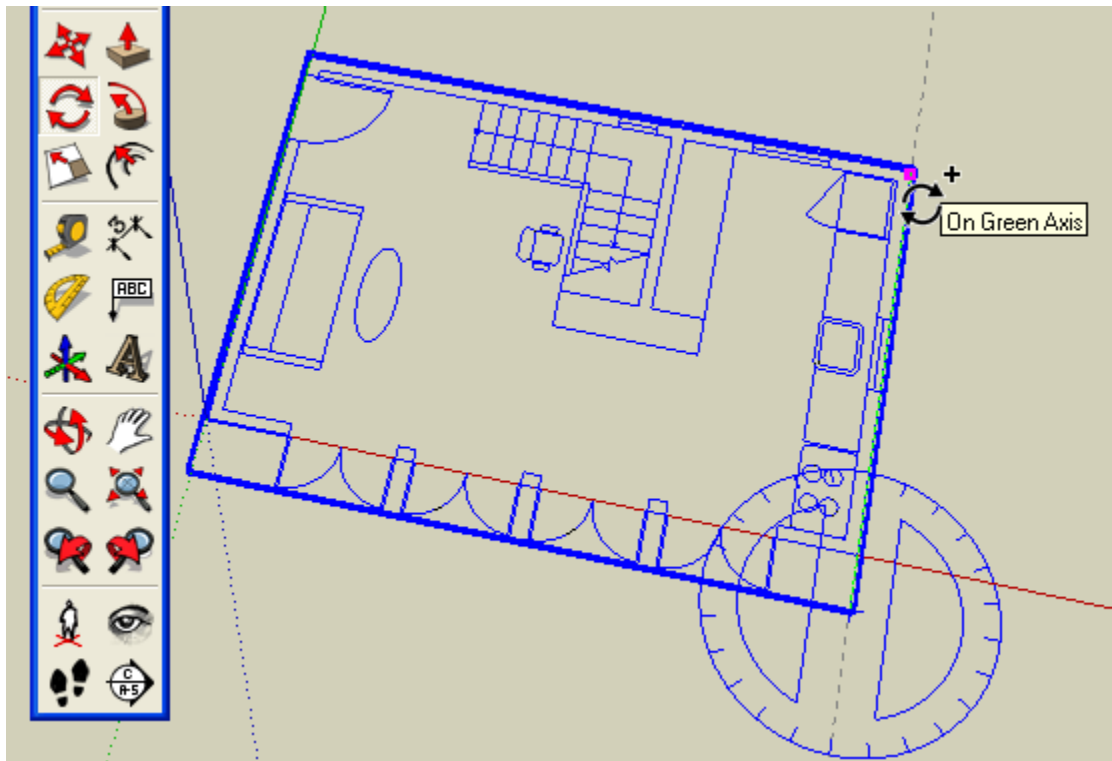


The axis tool re-aligns the xyz coordinates ...



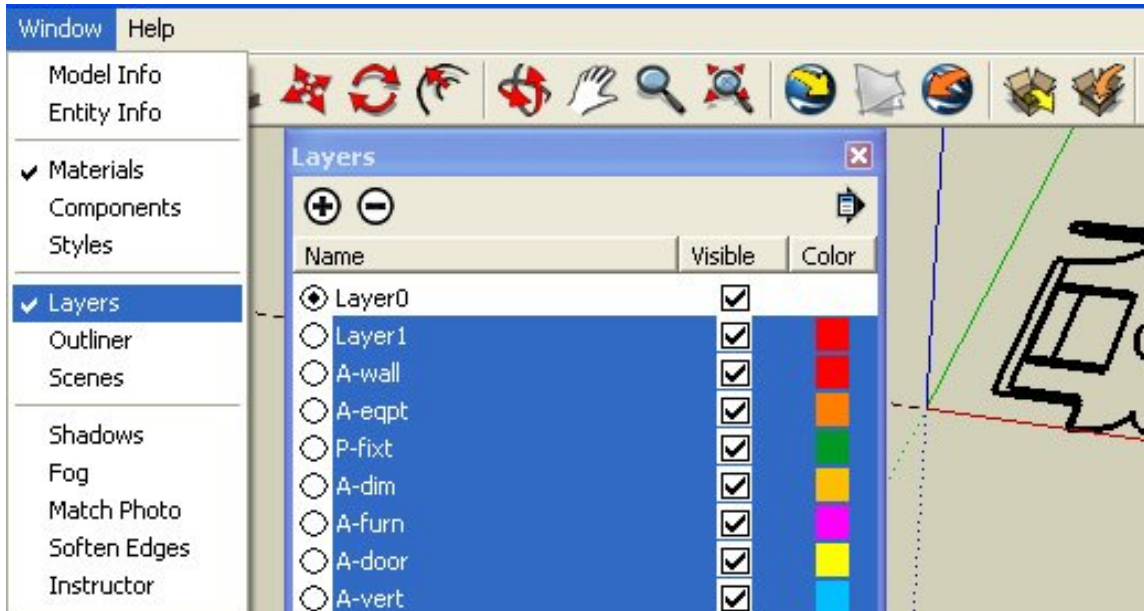


Or, use the angle tool by clicking on a point, then another point, then rotate:

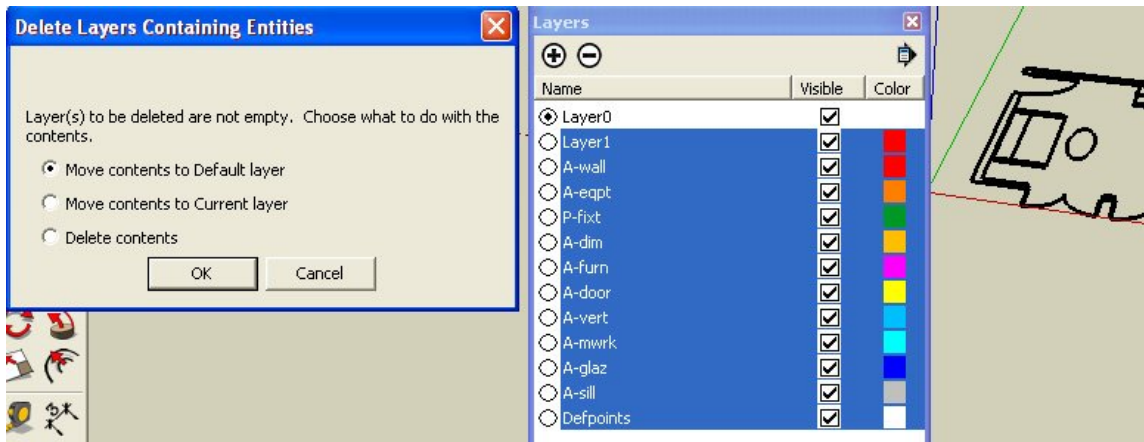


Delete extra layers and place group on a new layer

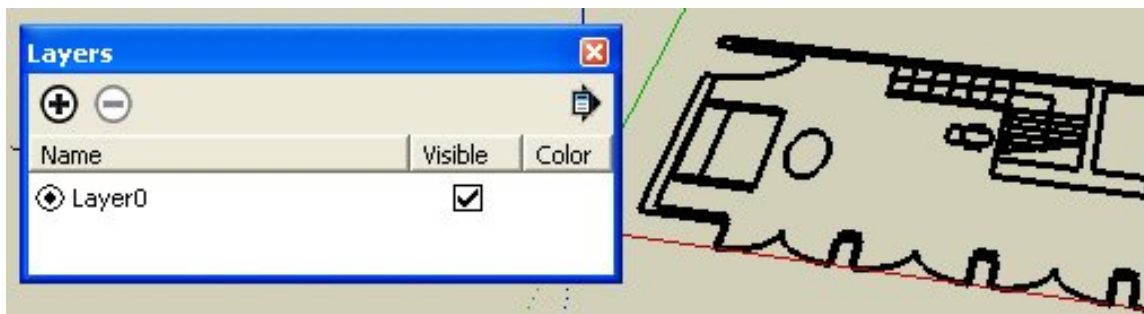
Select all the layers EXCEPT layer 0



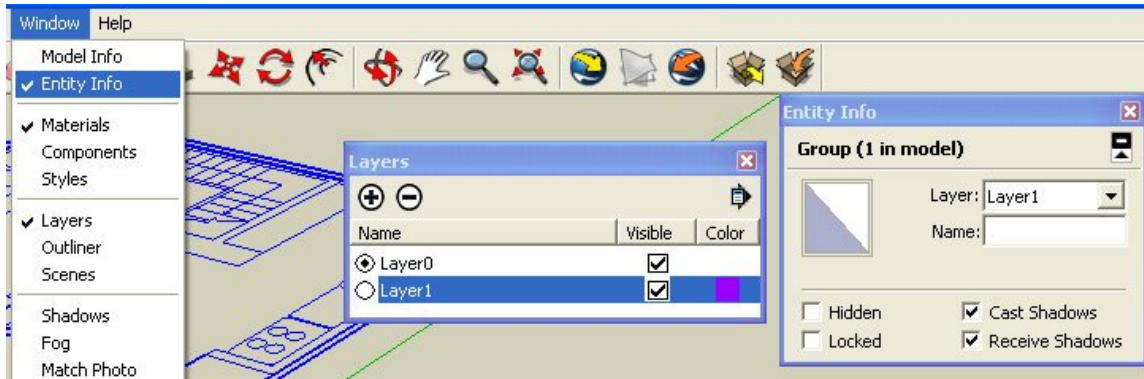
Delete those layers with the **minus icon** at the upper left of the layers palette. Select **Move contents to Default Layer**



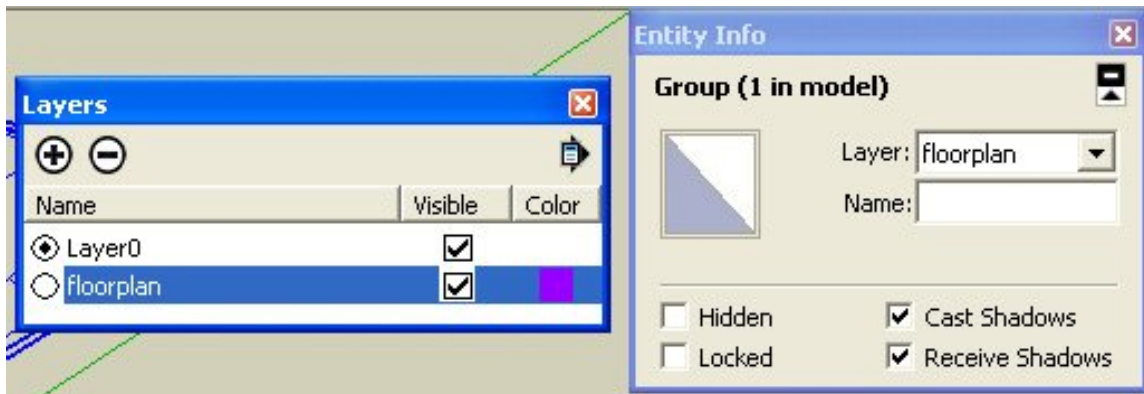
Ta daa.



Make a **new layer** with the PLUS icon.
Make sure the plan art group is **selected**.
Open the **Entity Info** dialog.

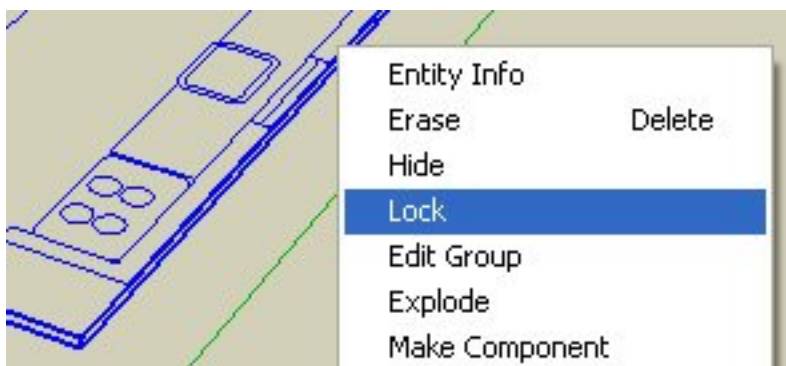


Name the new layer **floorplan**
Select the **floor plan layer** the drop-down in the dialog.
This effectively **moves** the plan to the floorplan layer.
Turn on and off the **visibility** of the layers to check.



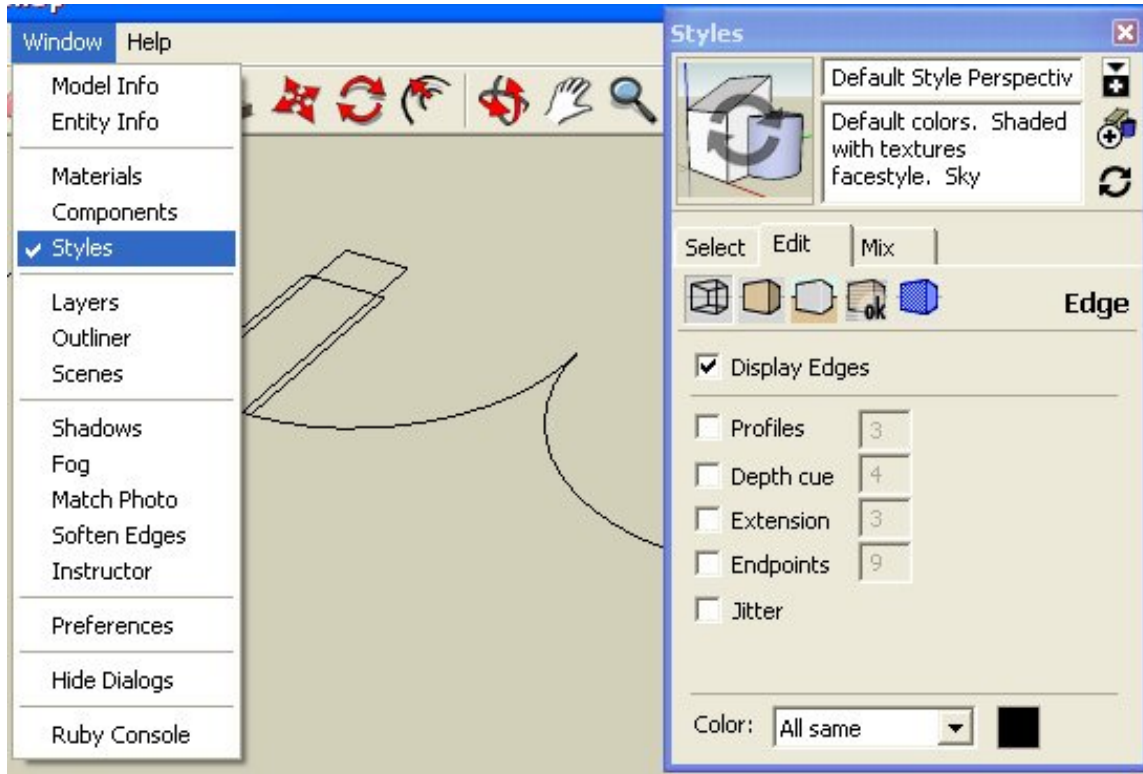
Lock the group

This makes it so we can't accidentally erase or move the reference layer.



Adjust layer styles

Use this to **turn off profiles** so the lines are more accurate:



Create scenes to toggle layer visibility

Open Window/**scenes** and Window/**layers**

Turn off floorplan layer and make a scene and name it floorplan off;

Turn on the floorplan layer and make a scene and name it floorplan on.

Note – you have to double-click on a scene name to view it – give it a try!

