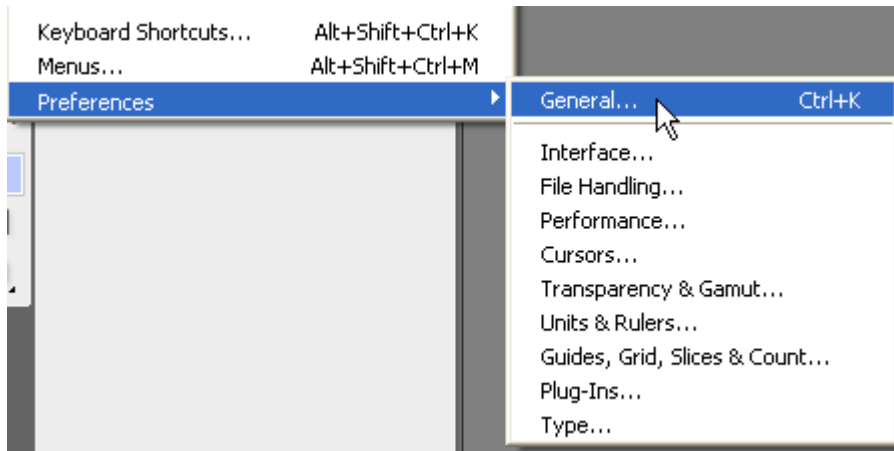


Photoshop CS3 Preferences

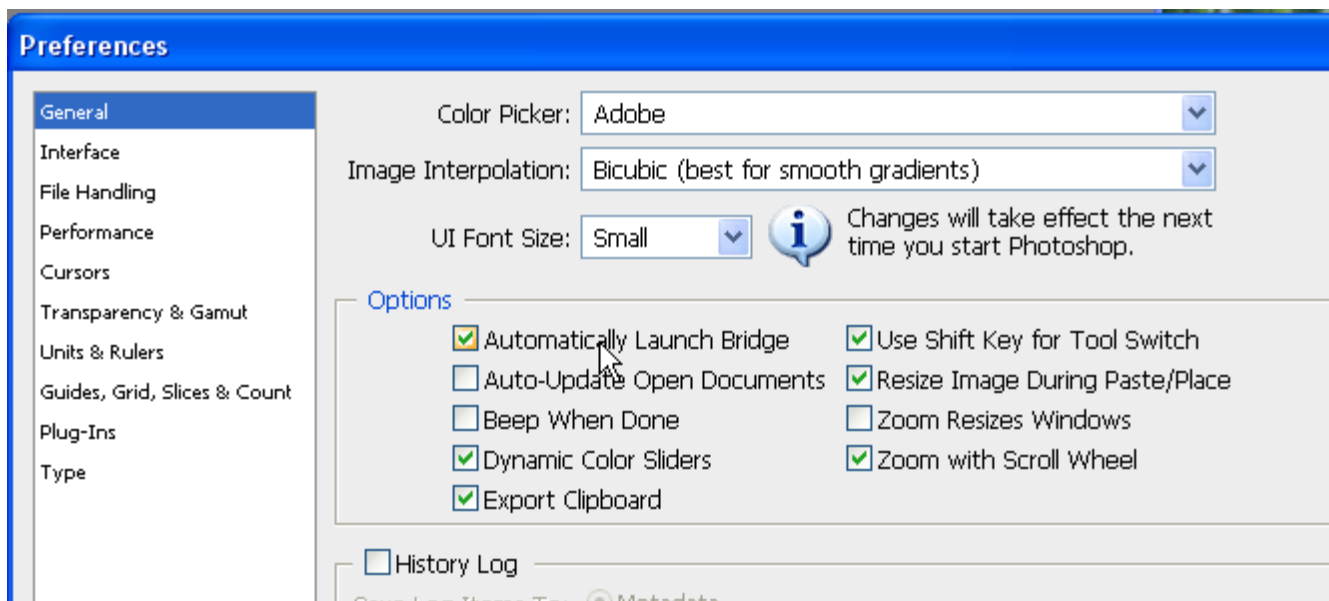
Let's set these up – the defaults are not always ideal.

Ctrl K to access PREFERENCES, or, Edit/Preferences/General

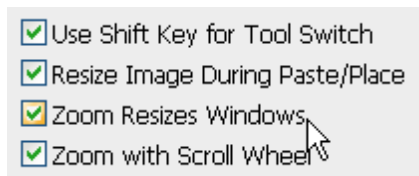


2 good ones to check are:

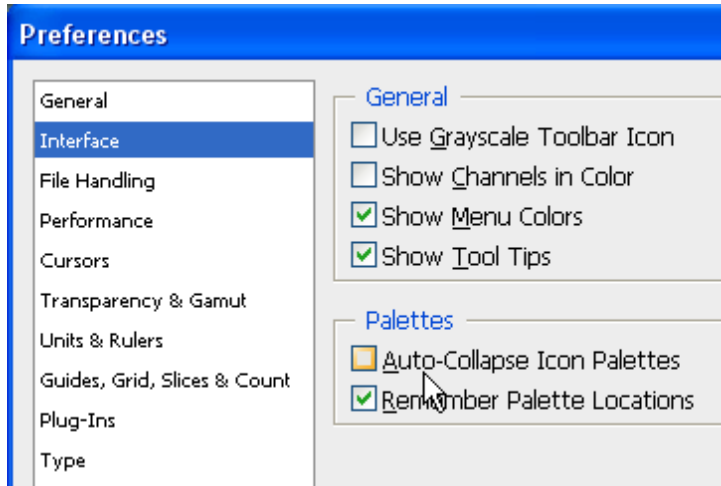
Automatically launch Bridge, and
Zoom with scroll wheel.



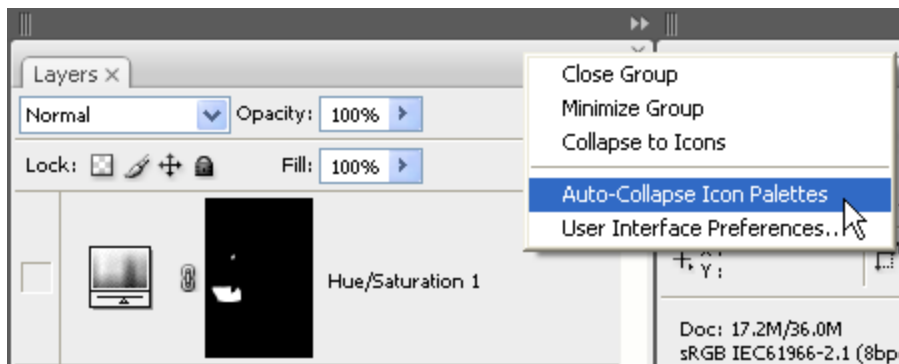
If you add zoom windows, in standard view, windows resize, even with Ctrl plus/minus.



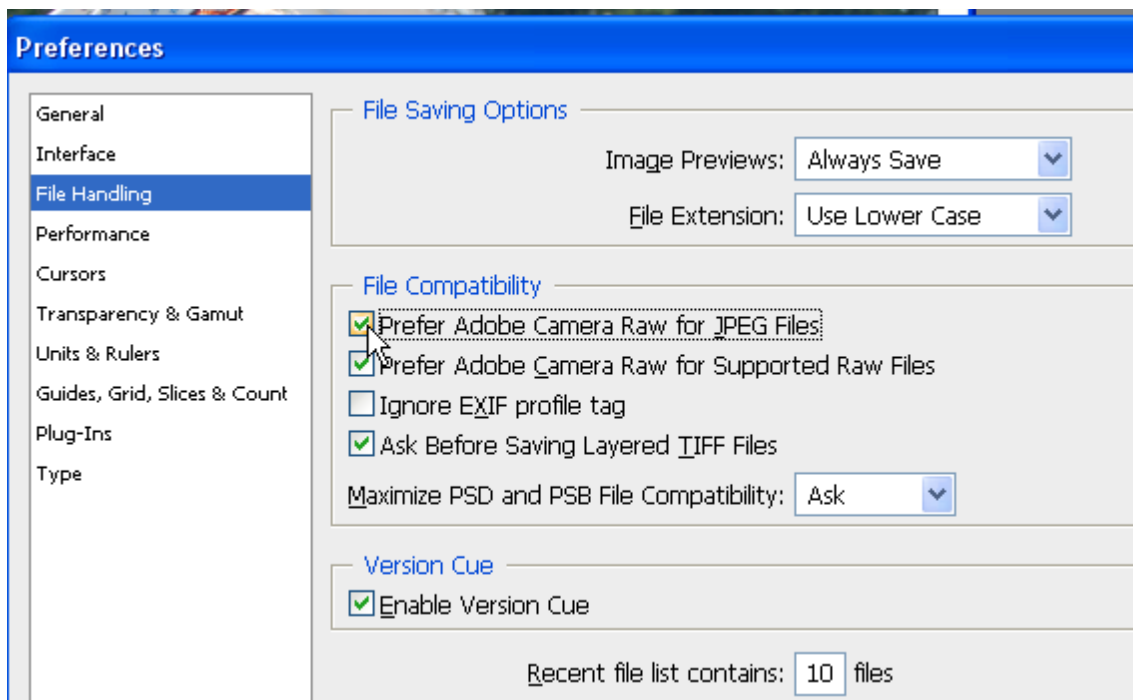
This guy here auto-collapses, which means, as soon as you access any tool from the tool palette, the other palettes close up.



You can also do that here – right click on the gray part:

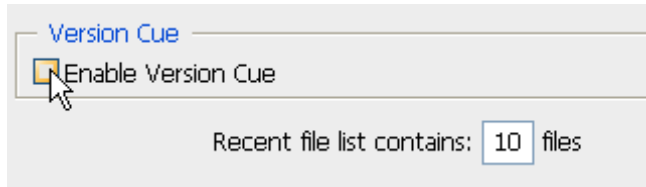


this is very cool. You can force PSD to open jpegs in the camera raw utility:

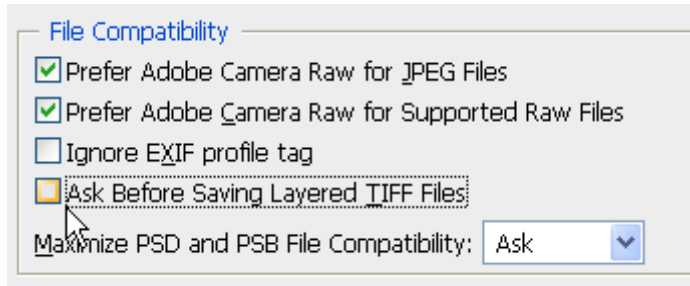


Note – version cue is part of the creative suite.

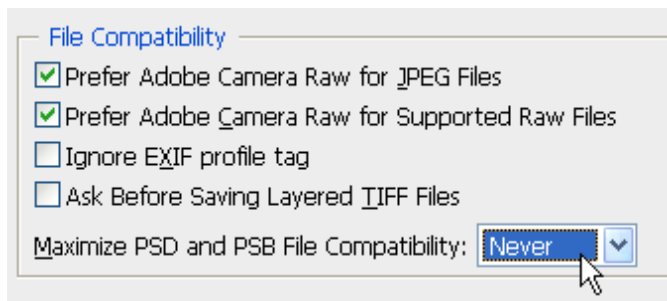
Turn off version cue, unless you use it -- it slows things down



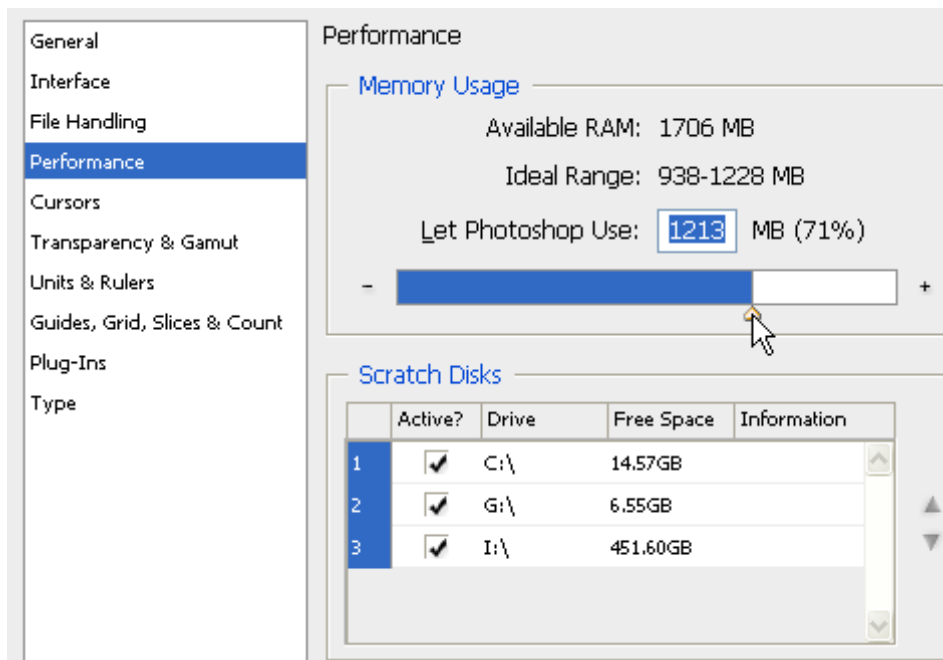
Let's turn this off, you can save layers with tiffs, so why not always do so ...



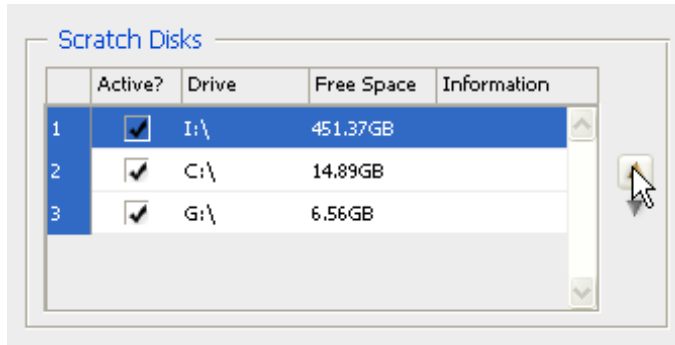
Turning off this compatibility dialogue will disappear an annoying question with each new file save. However, this is helpful if you send PSD files to Premiere or InDesign.



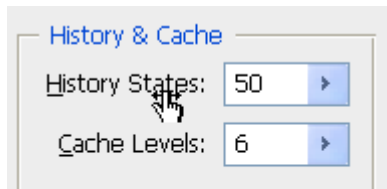
50-70% of memory is good for **performance**.
If you have a lot of memory you can even turn it down, to say, 40%.
The default of 55% is usually pretty good.



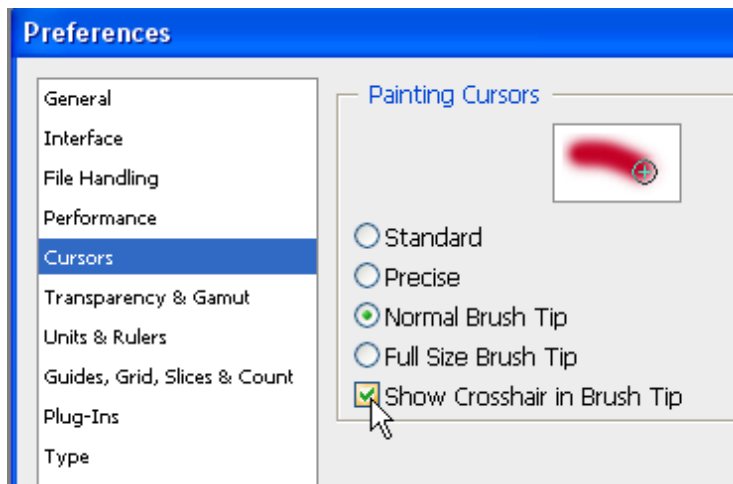
I can use the arrows to bring the biggest hard drive to the top:



Try scooting up history ... but let's not go higher than this:



This can be helpful with your brushes:



BTW if ever your brush cursors do not show the correct size, turn off caps lock.

Get with the world of pixels! (Unless there is a good reason not to.)

